

Human Peptide Ready HLA-B*07:02&B2M Monomer Protein

Cat. No. MHC-HM47R

Description

Source	Recombinant Human Peptide Ready HLA-B*07:02&B2M Monomer Protein is expressed from HEK293 with His tag and Avi tag at the C-Terminus. It contains Gly25-Val309 (HLA-B*07:02) and Ile21-Met119 (B2M).
Accession	P01889(HLA-B*07:02)&P61769(B2M)
Molecular Weight	The protein has a predicted MW of 48.50 kDa. Due to glycosylation, the protein migrates to 50-65 kDa based on Bis-Tris PAGE result.
Endotoxin	Less than 1EU per µg by the LAL method.
Purity	> 95% as determined by Bis-Tris PAGE > 90% as determined by HPLC

Formulation and Storage

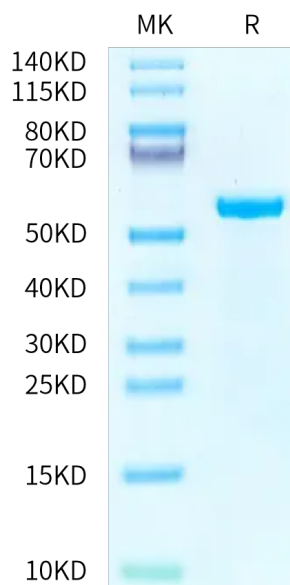
Formulation	Lyophilized from 0.22 µm filtered solution in PBS (pH 7.4). Normally 8% trehalose is added as protectant before lyophilization.
Reconstitution	Centrifuge the tube before opening. Reconstituting to a concentration more than 100 µg/ml is recommended. Dissolve the lyophilized protein in distilled water.
Storage	-20 to -80°C for 12 months as supplied from date of receipt. -80°C for 3 months after reconstitution. Recommend to aliquot the protein into smaller quantities for optimal storage. Please minimize freeze-thaw cycles.

Background

Peptide Ready HLA-B*07:02&B2M Monomer is absent from peptide, namely peptide-receptive MHC. It can be loaded with antigenic peptides matching HLA-B*07:02. Peptide ready MHC molecules comprising human HLA-B*07:02 alleles and B2M, which can be readily tetramerized and loaded with peptides of choice in a high-throughput manner.

Assay Data

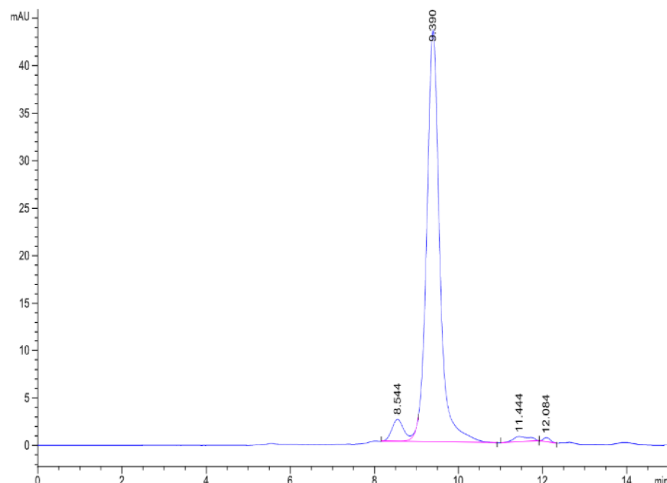
Bis-Tris PAGE



Human Peptide Ready HLA-B*07:02&B2M Monomer on Bis-Tris PAGE under reduced condition. The purity is greater than 95%.

SEC-HPLC

Assay Data

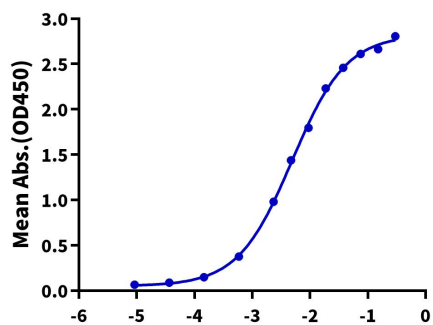


The purity of Human Peptide Ready HLA-B*07:02&B2M Monomer is greater than 90% as determined by SEC-HPLC.

ELISA Data

Human Peptide Ready HLA-B*07:02&B2M Monomer, His Tag ELISA

0.1µg Human Peptide Ready HLA-B*07:02&B2M Monomer, His Tag Per Well



Immobilized Human Peptide Ready HLA-B*07:02&B2M Monomer, His Tag at 1µg/ml (100µl/well) on the plate. Dose response curve for Anti-HLA class I (W6/32) Antibody, hFc Tag with the EC50 of 4.9ng/ml determined by ELISA.